

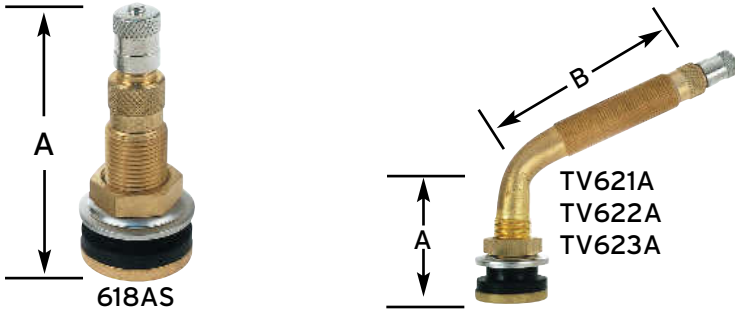


AIR WATER

VALVE STEMS & ACCESSORIES

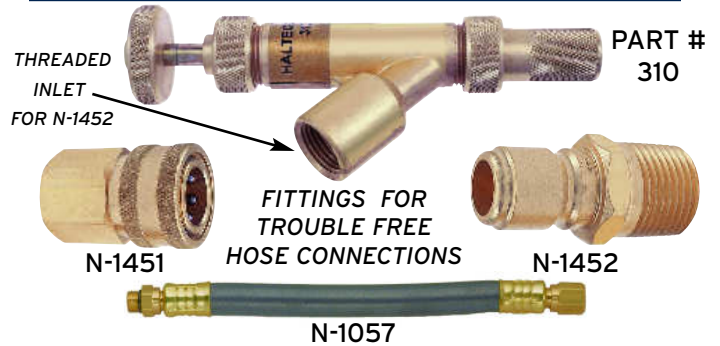


AIR WATER TUBELESS TRACTOR VALVE STEMS



PART #	TR NO.	BEND ANGLE	A	B	VALVE HOLE
618AS	TR-618A	-	1 7/8"		.625
TV621A	TR-621A	65°	1 1/2"	3"	.625
TV622A	TR-622A	90°	1 3/4"	4 1/2"	.625
TV623A	TR-623A	65°	1 1/2"	2 1/4"	.625

VALVE ADAPTER GUN & FITTINGS



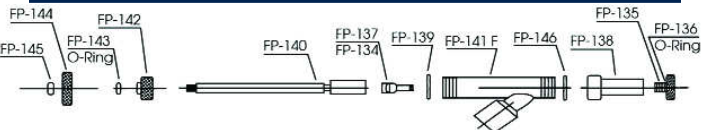
PART #	DESCRIPTION
310	VALVE ADAPTER GUN
N-1451	1/2" NPT FEMALE FITTING FOR 310 GUN
N-1452	1/2" NPT MALE FITTING FOR 310 GUN
N-1057	FLEXIBLE RUBBER EXTENSION FOR 310

TRACTOR STEM CORE HOUSINGS & EXTENSION



PART #	DESCRIPTION
TV-6008	LOW PROFILE FRONT TRACTOR STEM (FITS .453 & .625 HOLE)
CH3	CORE HOUSING FOR ALL AIR-LIQUID VALVES
TVCH1	FITS OLD STYLE TR218 & TR220 VALVES
TV-5905	90° 2 3/4" LONG AIR LIQUID EXTENSION 1 1/2" TALL

PARTS LIST FOR # 310 VALVE ADAPTER GUN



FP-134	LARGE BORE CORE REMOVER
FP-135	ADAPTER FOR STANDARD VALVE (EQUIPPED WITH FP-136)
FP-136	O-RING FOR FP-135 ADAPTER
FP-137	STANDARD VALVE CORE REMOVER
FP-138	EJECTOR UNION (EQUIPPED WITH FP-146)
FP-139	GASKET
FP-140	STEM
FP-141F	ADAPTER BODY
FP-142	STEM SEALING NUT
FP-143	O-RING FOR FP-142 (STEM SEAL)
FP-144	HAND WHEEL
FP-145	LOCK NUT
FP-146	TEFLON GASKET

RIM HOLE BUSHING & RIM NUTS



476	RIM HOLE BUSHING TO MAKE A BIG HOLE SMALL
LN-10	BRASS RIM NUT FOR TRACTOR TUBE VALVES
LN-10-P	PLASTIC RIM NUT FOR TRACTOR TUBE VALVES



N1091	GARDEN HOSE ADAPTER (WITH N1091-2 & N1091-3)
N1091-2	ADAPTER FOR OLD STYLE A/W STEMS
N1091-3	ADAPTER FOR STANDARD VALVES

TRACTOR 4-WAY & TUBE DEFLATOR



TL695	TRACTOR STEM 4-WAY VALVE REPAIR TOOL
ASP-10	INNER TUBE DEFLATOR FOR TRACTORS

CHAIN & CABLE TUBE FISHING TOOLS



1633	11" STANDARD BORE CHAIN TOOL
8909-C	31" TRACTOR/LB. STEM CHAIN FISHING TOOL
T15	8" STANDARD BORE CABLE TOOL
T11	24" STANDARD BORE CABLE TOOL



LARGE BORE

HALTEC CORPORATION

VALVE STEMS & ACCESSORIES



LARGE BORE GAUGES, CHUCKS & ACCESSORIES



PART #	DESCRIPTION	PHOTO
*8909-C	31" LARGE BORE CHAIN FISHING TOOL	1
N1410	OFF HIGHWAY TIRE TREAD DEPTH GAUGE	2
*GA-255	10-150 LB. 8" LARGE BORE SWIVEL AIR GAUGE	3
*G420	20-120 LB. 6" LARGE BORE STRAIGHT AIR GAUGE	4
*AC41	RIGHT ANGLE LARGE & STANDARD BORE CHUCK	5
*377	5 1/2" STRAIGHT L.B. LOCK ON AIR CHUCK	6
*ASP-10	LARGE BORE INNER TUBE DEFLATOR	7
*328	1 3/4" STRAIGHT L.B. LOCK ON AIR CHUCK	8
*H4660A	1 3/4" STRAIGHT L.B. LOCK ON AIR CHUCK-CLOSED	9
*H4660A-OP	1 3/4" STRAIGHT L.B. LOCK ON AIR CHUCK-OPEN	9

*Will also work on dry tractor/grader tires.

ADAPTERS, CORES, CAPS & CORE TOOLS



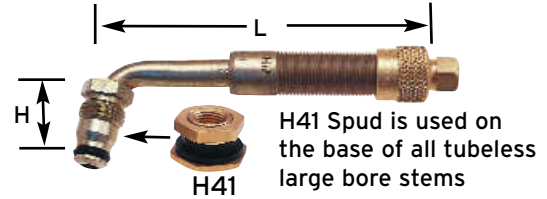
Large Bore to Standard Bore Adapters

Large Bore Valve Caps

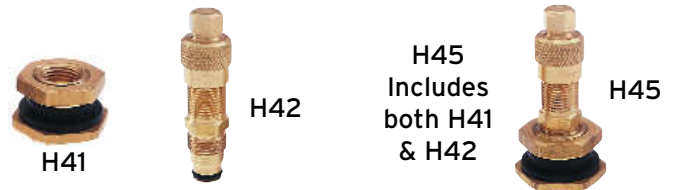


PART #	DESCRIPTION
1685	LARGE BORE-STANDARD BORE CORE REMOVER
8807N4	LARGE BORE TO STANDARD BORE ADAPTER "OUTER"
AD1	LARGE BORE TO STANDARD BORE ADAPTER "INNER"
A145	HI TEMP. LARGE BORE VALVE CORE
A148	LARGE BORE VALVE CAP WITH CORE REMOVER
A149	LARGE BORE VALVE CAP WITH HEX CAP
TL695	LARGE BORE 4-WAY VALVE REPAIR TOOL

LARGE BORE SINGLE BEND TUBELESS VALVES



PART #	TR NO.	BEND ANGLE	"L" LENGTH	"H" HEIGHT
WH-300-J-650	J-650	80°	3 1/8"	1 5/64"
WH-45-2 1/2	J-4000-2 1/2	90°	2 1/2"	1 5/64"
WH-45-4	J-4000-4	90°	4"	1 5/64"
WH-45-6	J-4000-6	90°	6"	1 5/64"
WH-45-7 1/2	J-4000-7 1/2	90°	7 1/2"	1 5/64"
WH-45-13	J-4000-13	90°	13"	1 5/64"
WH-45-16	J-4000-16	90°	16"	1 5/64"



H41	SP-2	SPUD FOR ALL TUBELESS STEMS
H42	TRJ-670-2	1 1/2"
H45	TRJ-670-3	1 5/8"

LARGE BORE SCREW ON VALVES FOR INNER TUBES



LB218	J-1076B	86°	3 1/4"	1 1/8"
-------	---------	-----	--------	--------

STRAIGHT LARGE BORE EXTENSIONS



PART #	LENGTH	PART #	LENGTH
867-2	2"	867-10	10"
867-4 1/2	4 1/2"	867-12	12"
867-6	6"	867-16	16"
867-7	7"	867-241/2	24 1/2"
867-8	8"		

O RINGS FOR TUBELESS RIMS

.26 DIAMETER "THIN"

.375 DIAMETER "THICK"

PART #	SIZE
OR20JM	20"
OR224TG	24"
OR25T	25"



PART #	SIZE
OR324T	24"
OR325T	25"
OR329T	29"
OR333T	33"
OR335T	35"
OR345T	45"

O Rings come 24 per case & 2 per poly bag.



We have access to anything Large Bore that you need. We can even custom bend valve stems and extensions.



Phone 800-552-2938



priertiresupply.com

